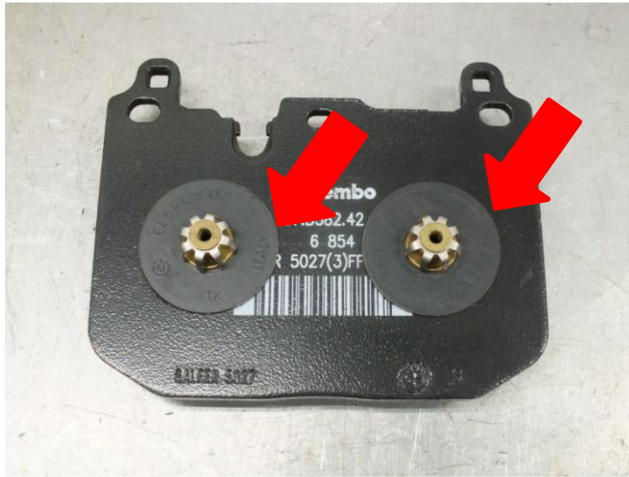


## Notice: iSWEEP R1312 Brake Pad Replacement

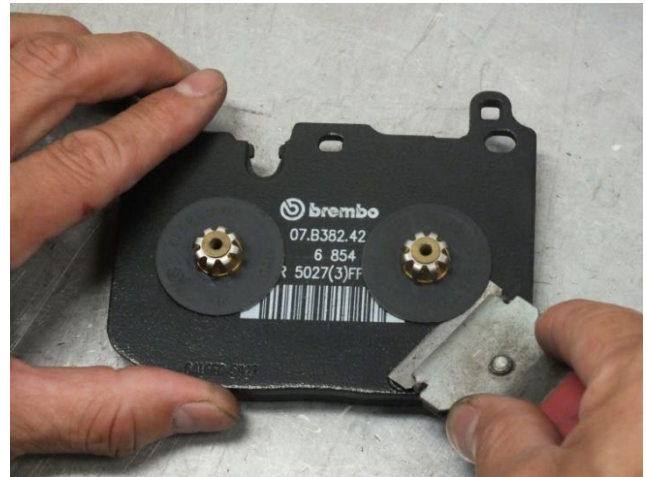
Thank you for purchasing iSWEEP Brake Pads.

The insulation plates equipped on factory brake pads are not included with the iSWEEP Brake Pad set [PN R1312]. Failure to use these insulation plates may result in excessive brake pad play and noise. The iSWEEP suggested retail price does not include these insulation plates so it is advised to reuse.



[1]

Locate the insulation plates on the factory brake pads. (Total 4 left and right)



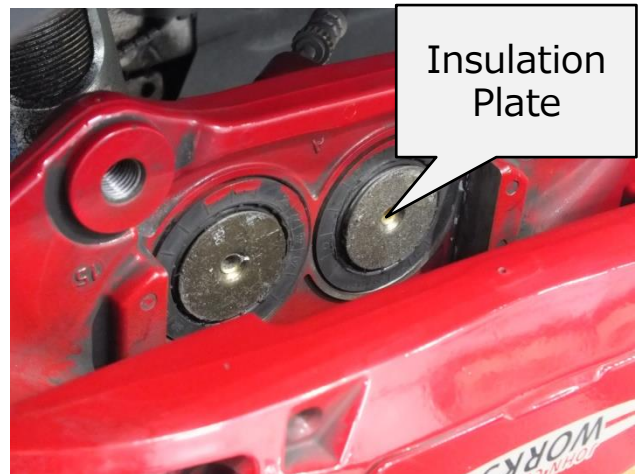
[2]

Careful not to bend the insulation plate, remove the insulation with a scraper.



[3]

Transfer the insulation plates to the caliper piston. The brake pads can then be installed.



[4]

※ Commercially available adhesive may be used if adhesion rate is low.